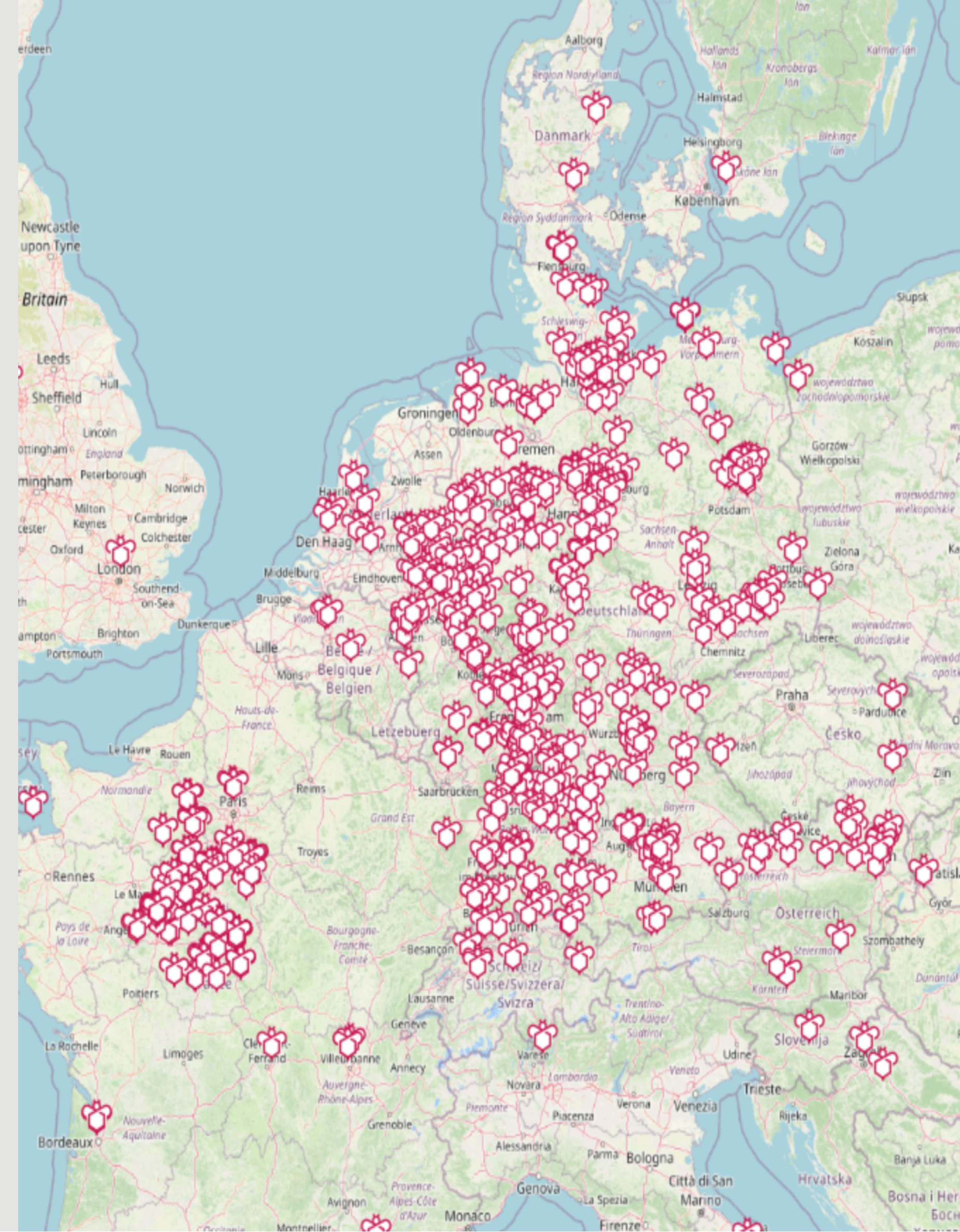




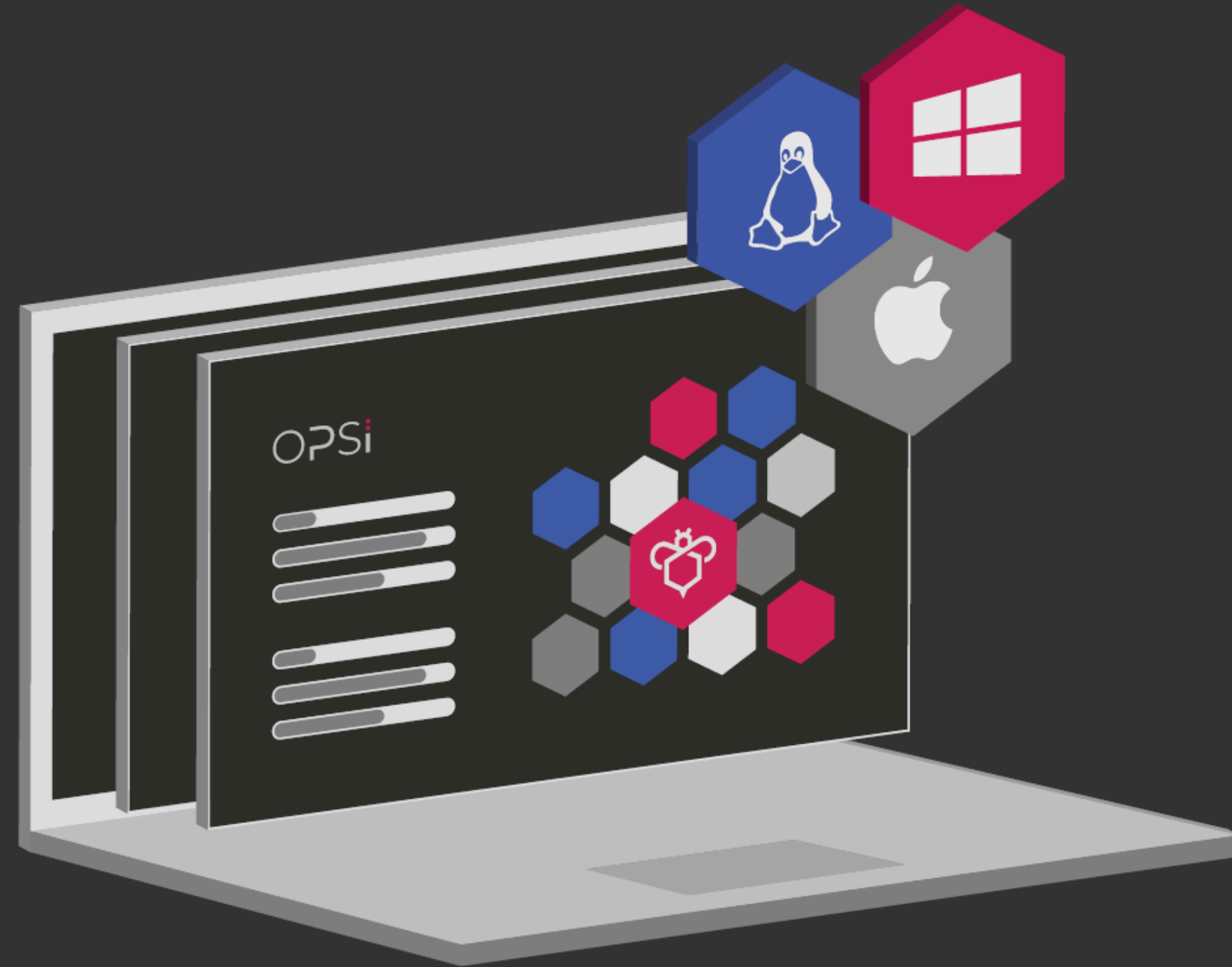
# UIB GMBH

- ◆ Founded in 1995 as an association of system administrators and programmers
- ◆ 30 employees.
- ◆ Focus on IT service management
- ◆ Manufacturer of the open source device management system **opsi**
- ◆ Support & training for **opsi**
- ◆ Company headquarters in Mainz
- ◆ [uib.de](http://uib.de), [opsi.org](http://opsi.org)





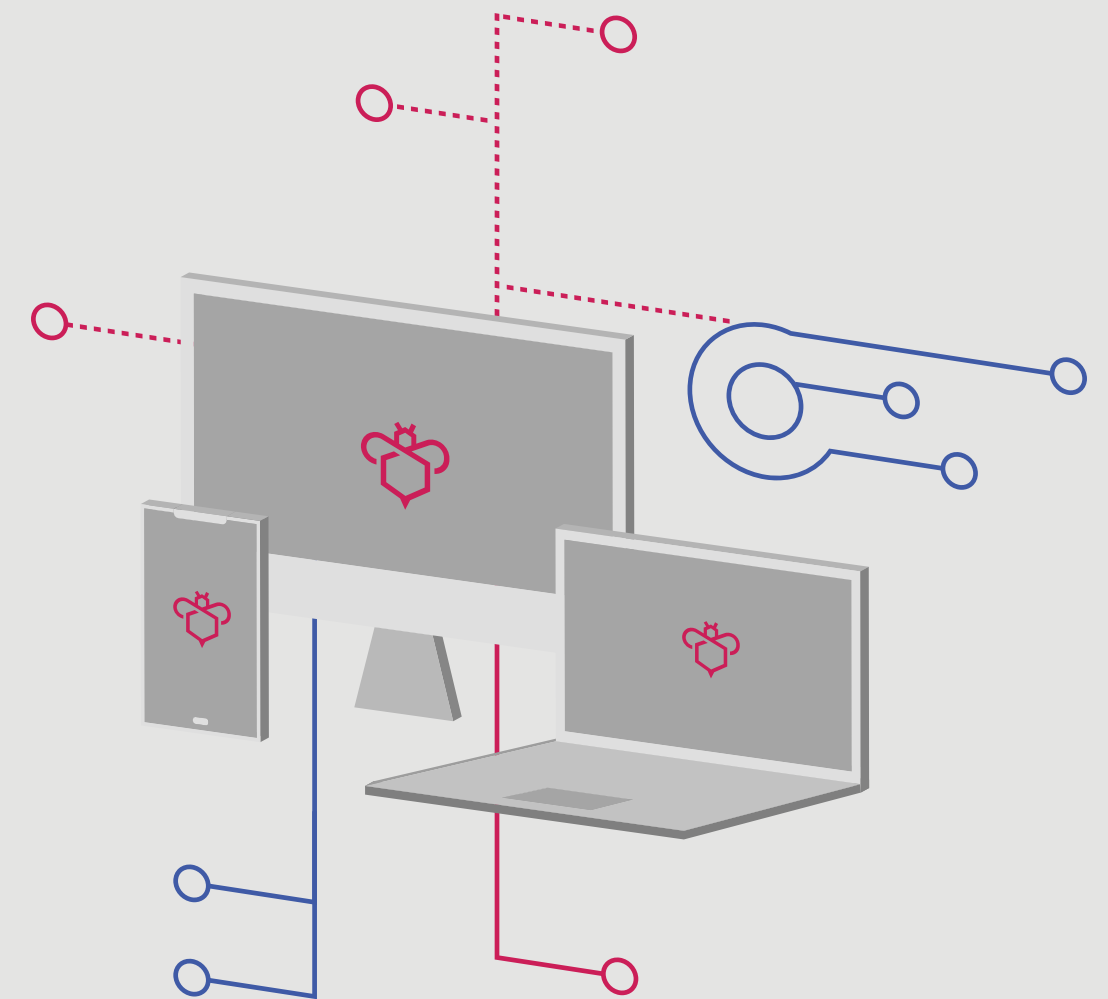
USE OPSI TO  
**MANAGE YOUR  
WINDOWS, LINUX  
& MACOS DEVICES**

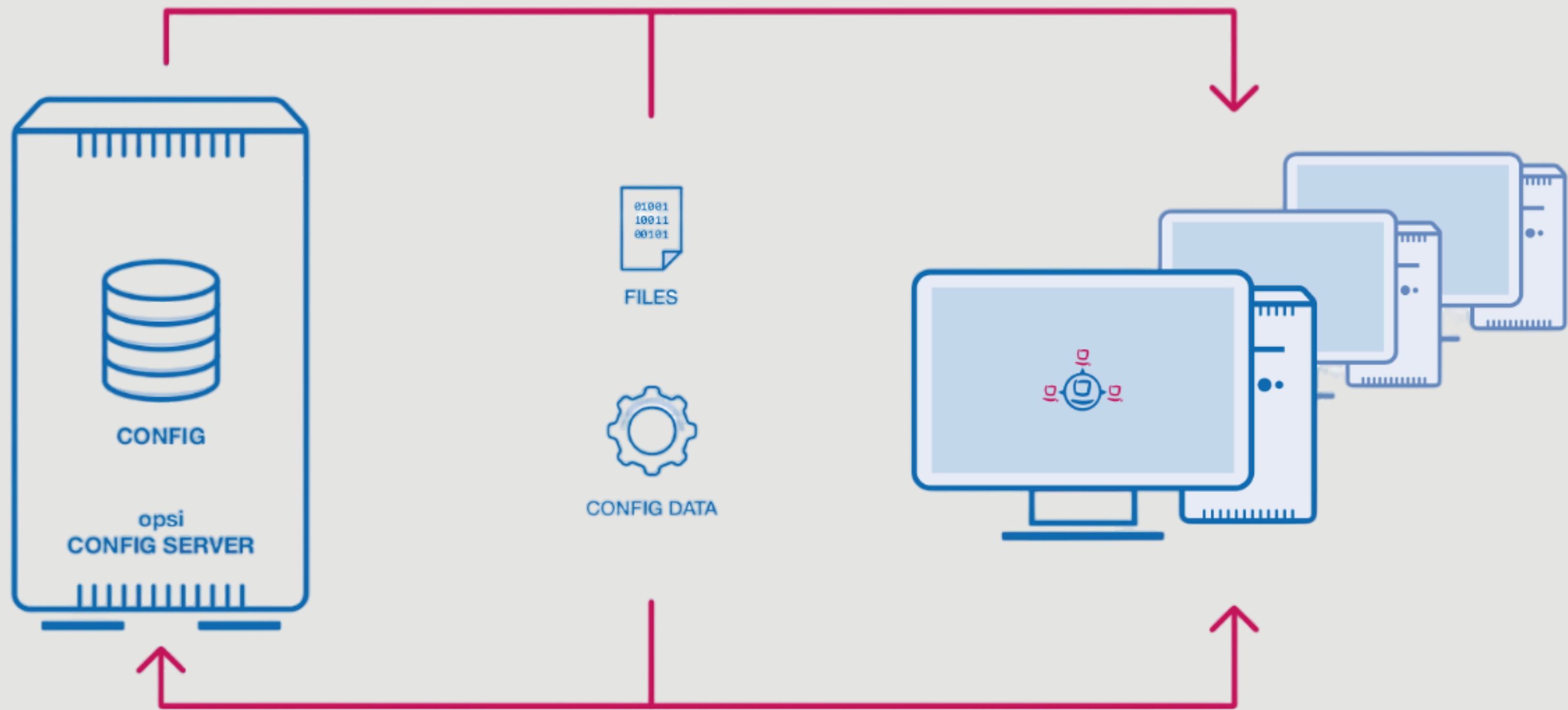


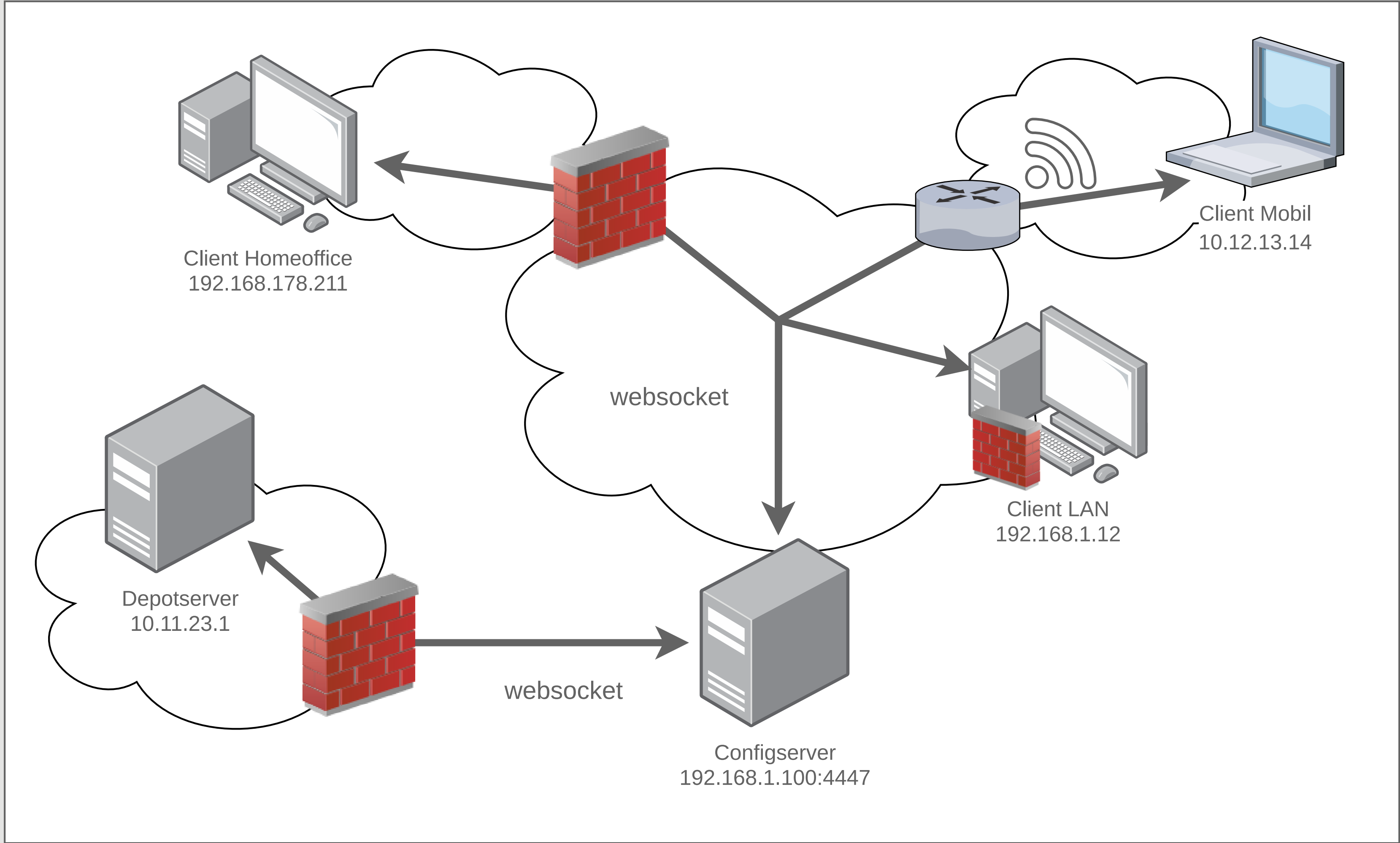
# OPSI - OPEN SYSTEM INTEGRATION

opsi is an open source system for managing devices.

- ◆ Automatic software distribution (Windows, Linux, Mac)
- ◆ Automatic operating system installation (Windows, Linux)
- ◆ Distribution of updates, configuration management
- ◆ Hardware and software inventory
- ◆ License management
- ◆ Support for distributed locations with multiple depot servers







# OPSI SERVER INSTALLATION

- ◆ Docker (<https://github.com/opsi-org/opsi-docker>)
- ◆ Ready-made VM (<https://tools.43.opsi.org/stable/>)
- ◆ Manual installation (<https://docs.opsi.org/opsi-docs-de/4.3/server/installation/installation.html>)
  - ◆ Debian/Ubuntu
  - ◆ RHEL/Alma/Rocky
  - ◆ SLES/openSuse
  - ◆ UCS

# DOCKER

- ◆ <https://hub.docker.com/r/uibmz/opsi-server>

- ◆ <https://github.com/opsi-org/opsi-docker>

```
git clone https://github.com/opsi-org/opsi-docker.git && cd opsi-docker && git checkout v4.3  
oder
```

```
https://github.com/opsi-org/opsi-docker/archive/refs/heads/v4.3.zip
```

- ◆ Helper-Script (opsi-server.sh / opsi-server.ps1)



# OPSI SERVER

- ◆ Connect to the server for the first time
- ◆ Terminal access via admin page

# SOFTWARE DEPLOYMENT

- ◆ opsi-configed
- ◆ opsi-webgui
- ◆ opsi-cli

# EVENTS

- ◆ **gui\_startup**: An event of type `gui_startup` occurs when the client (the GUI) is started. It is the most common event and is active by default.
- ◆ **user\_login**: Is triggered when a user logs on to the system.
- ◆ **timer**: Occurs at fixed intervals (every `<interval>` seconds).
- ◆ **sync\_completed**: Is triggered when the synchronization of configurations (`sync_config_from_server`, `sync_config_to_server`) or of products (`cache_products`) has taken place.
- ◆ **on\_demand**: The event occurs if it has been explicitly requested, e.g. via the `opsi-configed` (see chapter Management interface `opsi-configed`) or via the Software On Demand extension.

# CONFIGURATION

## ◆ Host parameters

*To configure the client agent and (re)write entries in the `opsclientd.conf` file, set host parameters.*

Server configuration > Depot configuration > Client configuration

## ◆ Examples:

- ◆ working window
- ◆ action user cancelable
- ◆ shutdown user selectable time

# WHAT IS AN OPSI PACKAGE?

- ◆ An opsi package consists of:
  - ◆ Installation data (for example a setup.exe or msi file)
  - ◆ Meta information (name, version, dependencies, ...)
  - ◆ Scripts (instructions on how the installation should run)
- ◆ Create packages:
  - ◆ opsi-setup-detector
  - ◆ manually
- ◆ Extensive documentation and active forum
- ◆ uib offers ready-made packages and packaging as a service

# AUTOMATIC OPERATING SYSTEM DEPLOYMENT

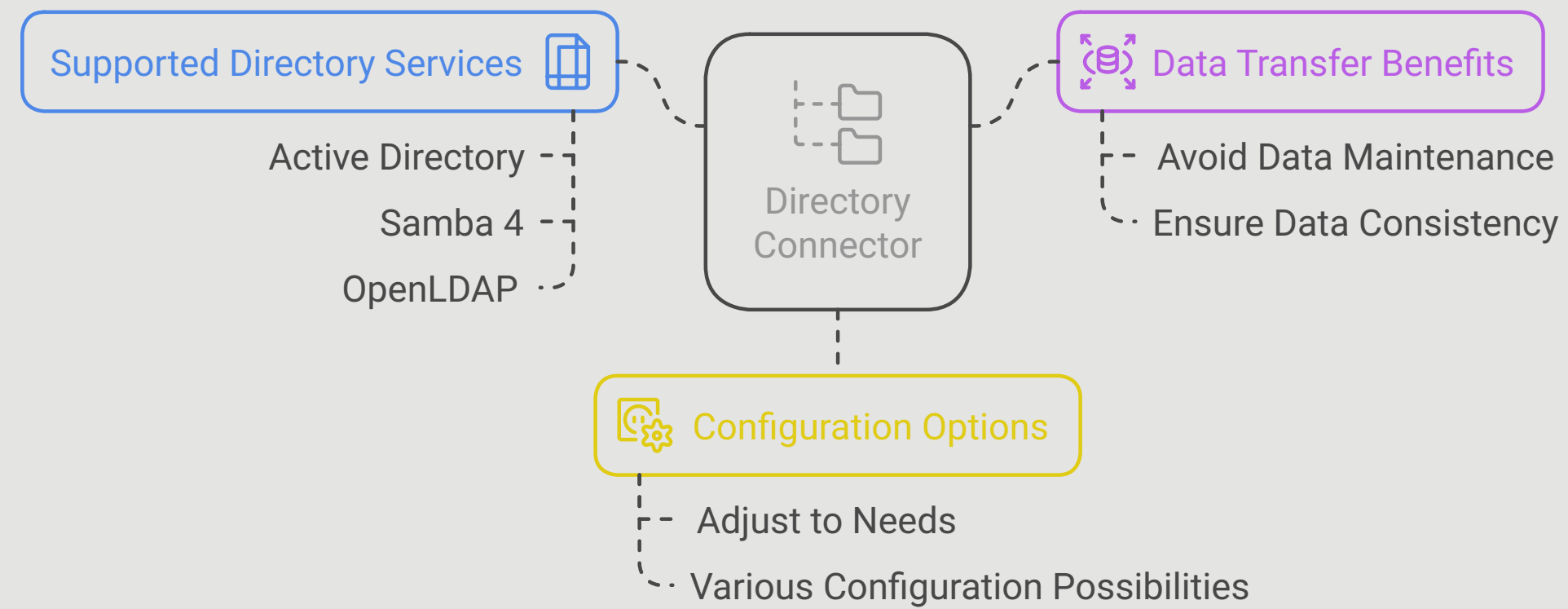
- ◆ Windows-Installation (Video)

# EXTENSIONS

- ◆ Directory Connector
- ◆ Linux-Agent
- ◆ MacOS-Agent
- ◆ License management
- ◆ Local Image
- ◆ WIM-Capture
- ◆ Monitoring
- ◆ Scalability
- ◆ Secureboot
- ◆ User Roles
- ◆ WAN/VPN
- ◆ Let's Encrypt
- ◆ Custom CA
- ◆ Single Sign-On
- ◆ Two-factor authentication

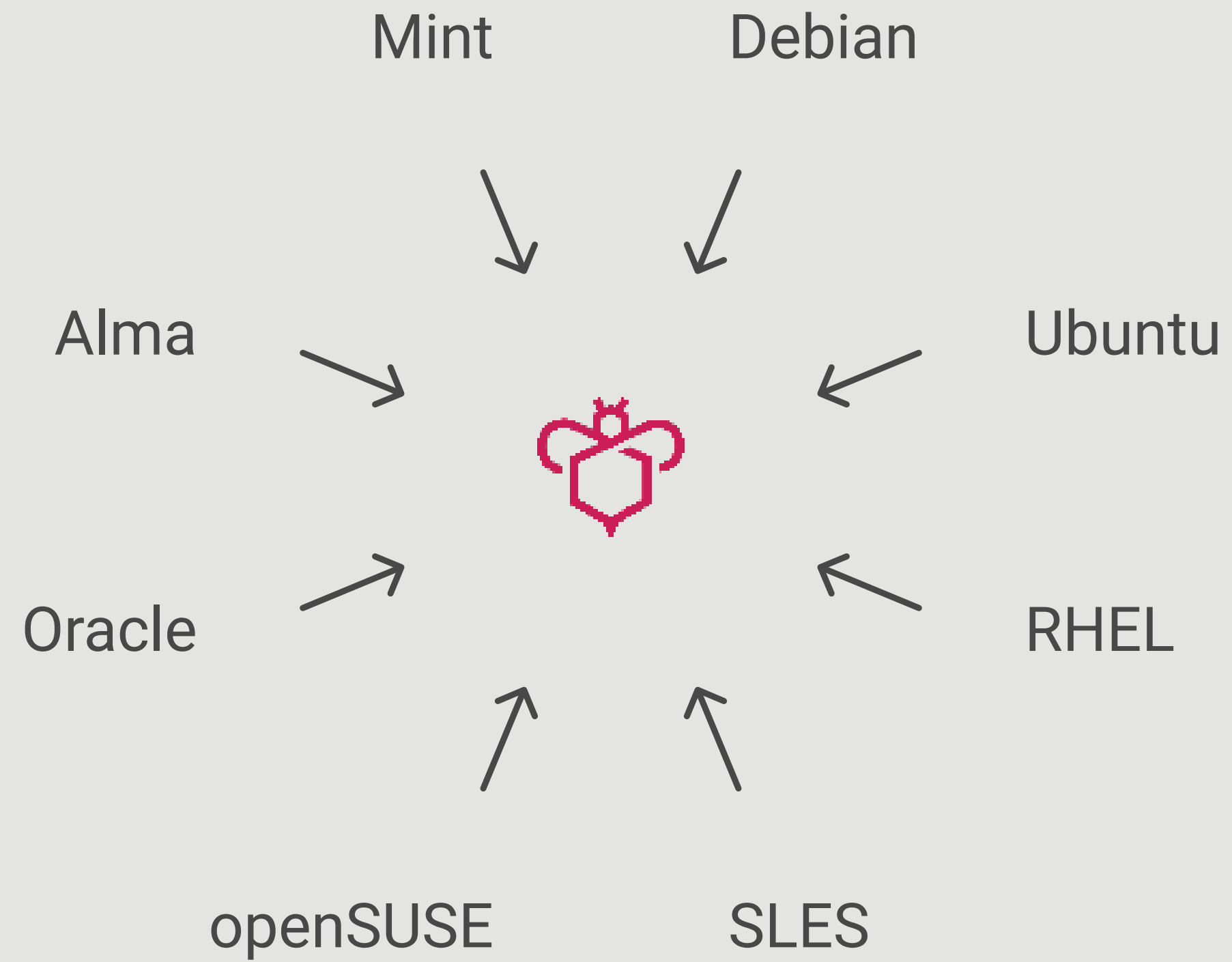
# DIRECTORY CONNECTOR

## Directory Connector: Integration and Configuration





# LINUX-AGENT



# MACOS-AGENT



## Installation Support

Supports unattended installation of various file types.



## Patch Management



## Automatic Configuration

Automates software configuration processes.

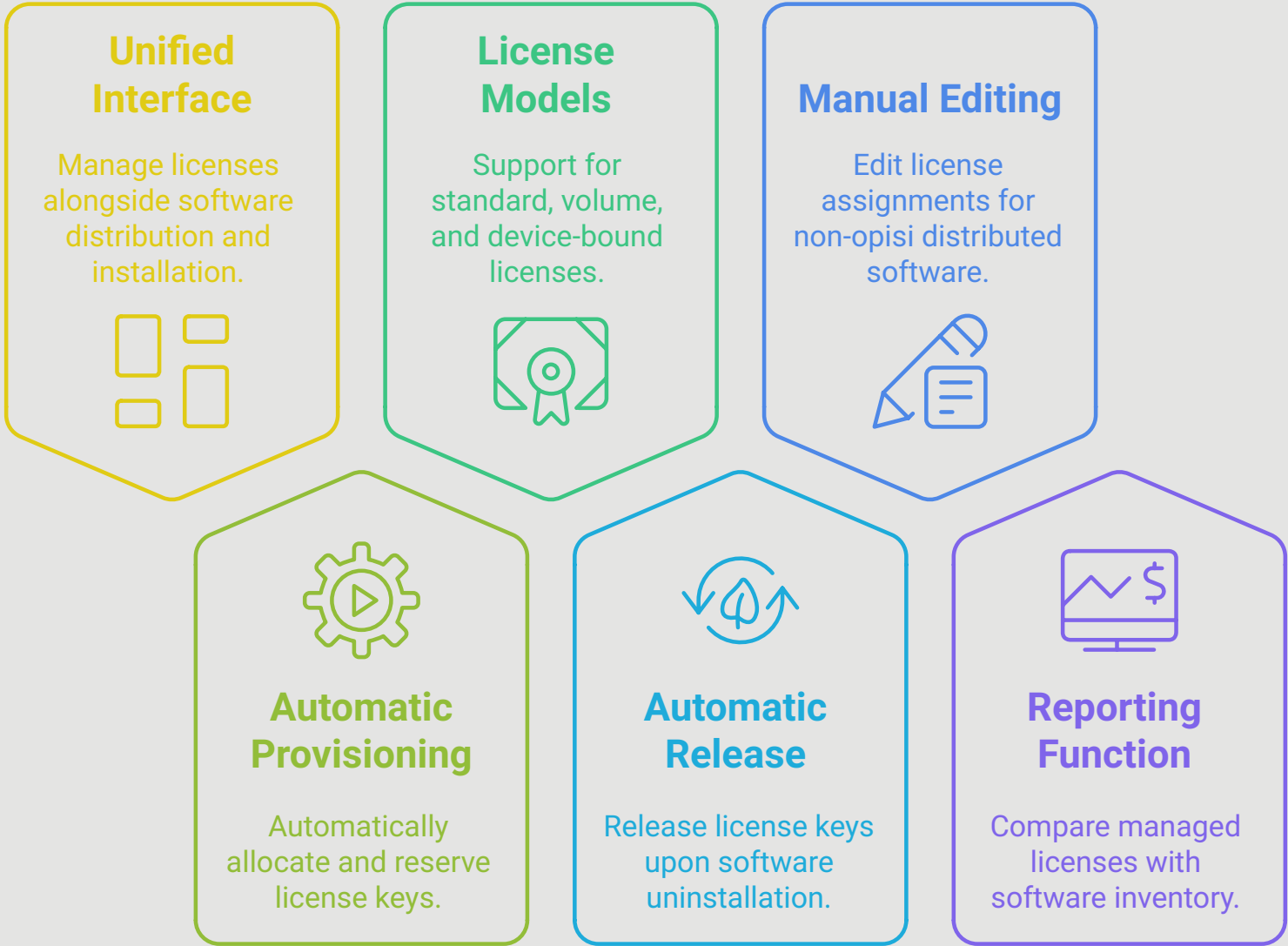


## Inventory Inclusion

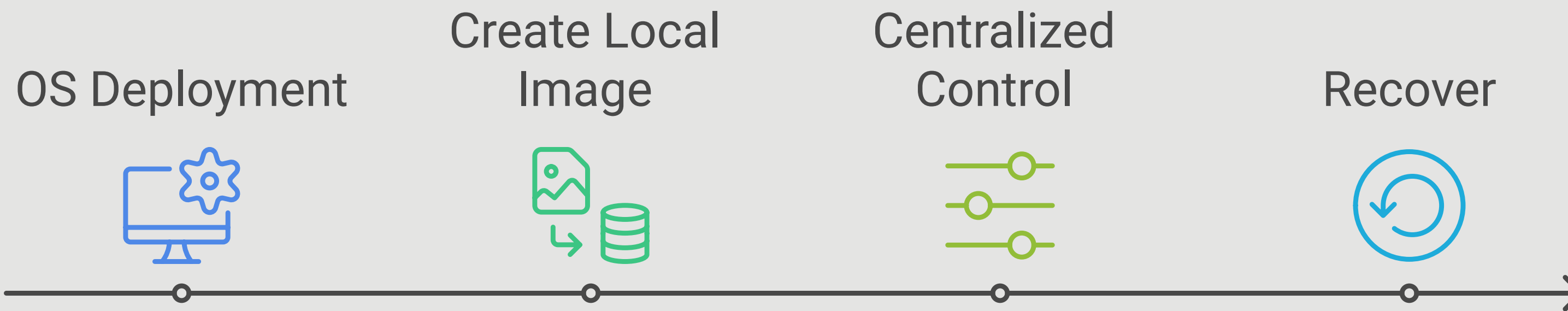
Integrates macOS devices into hardware and software inventory.

# LICENSE MANAGEMENT

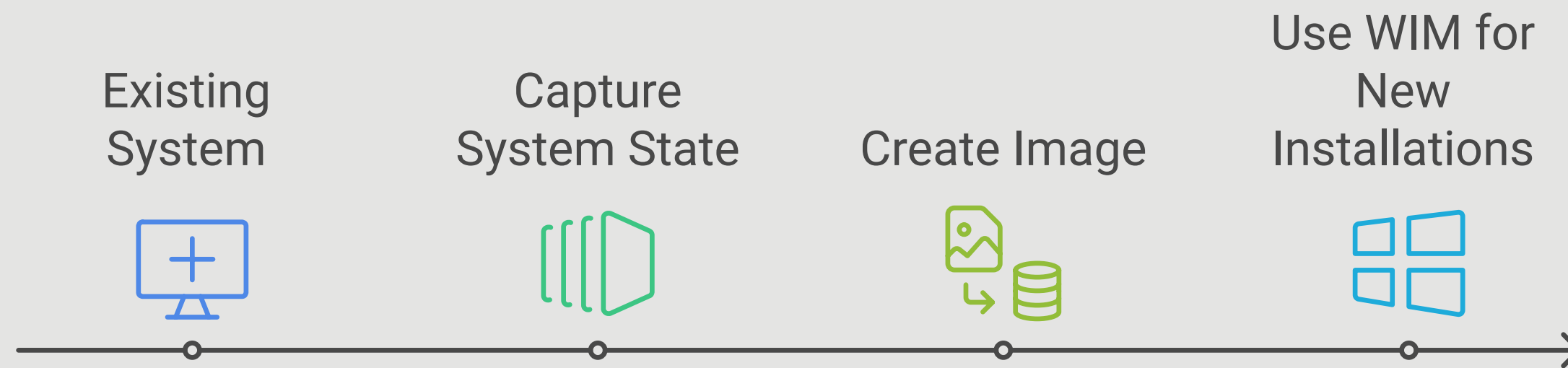
## License Management Features



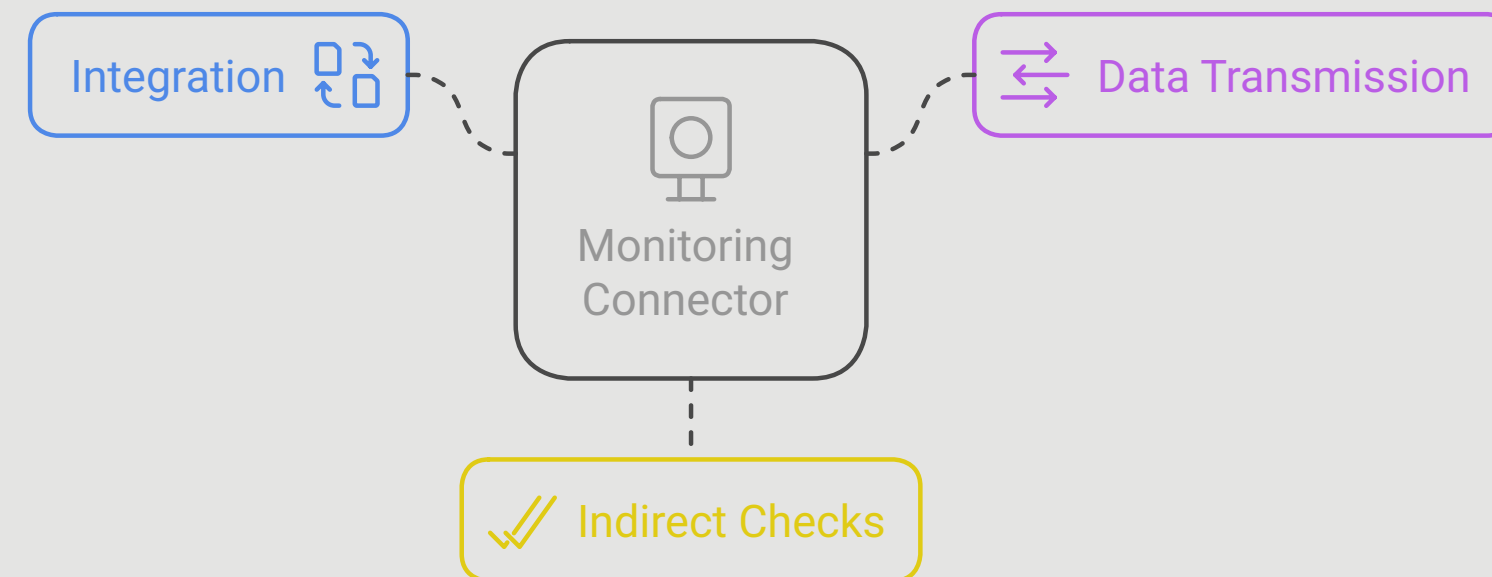
# LOCAL IMAGE



# WIM-CAPTURE

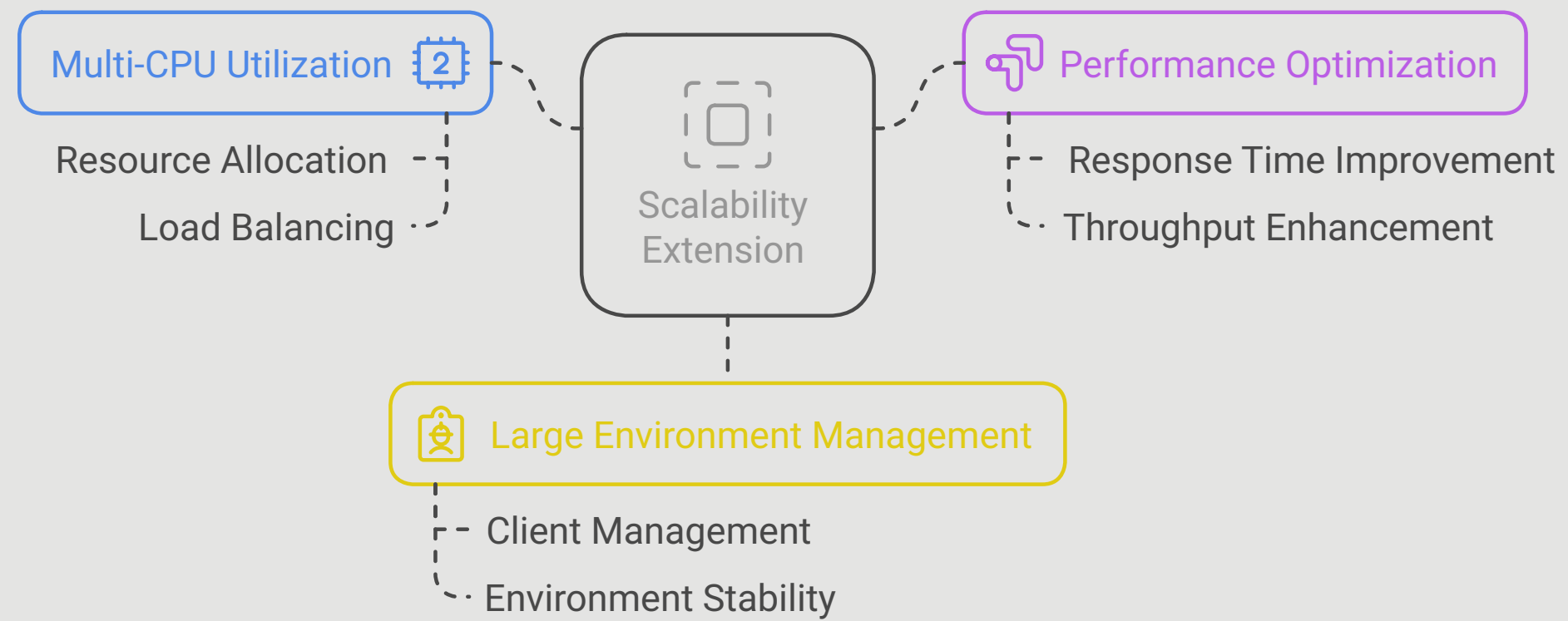


# MONITORING



# SCALABILITY

## Scalability in opsi: Enhancing Performance and Efficiency



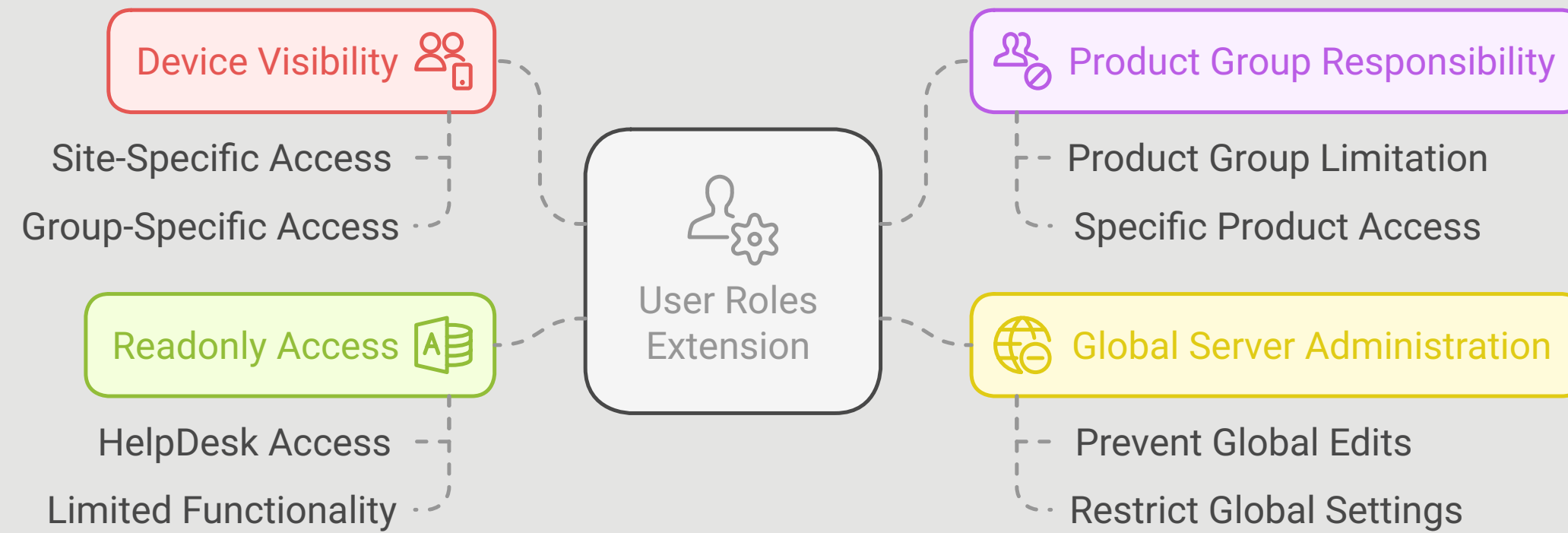
# SECURE BOOT



**Secure Boot  
Activated**



# USER ROLES



# WAN/VPN

Intelligent Caching  
Mechanism

Remote Computer  
Management



Full administrative  
control

# TWO-FACTOR AUTHENTICATION

Enhancing Server Security



# LET'S ENCRYPT *NEW*

## Trustworthiness

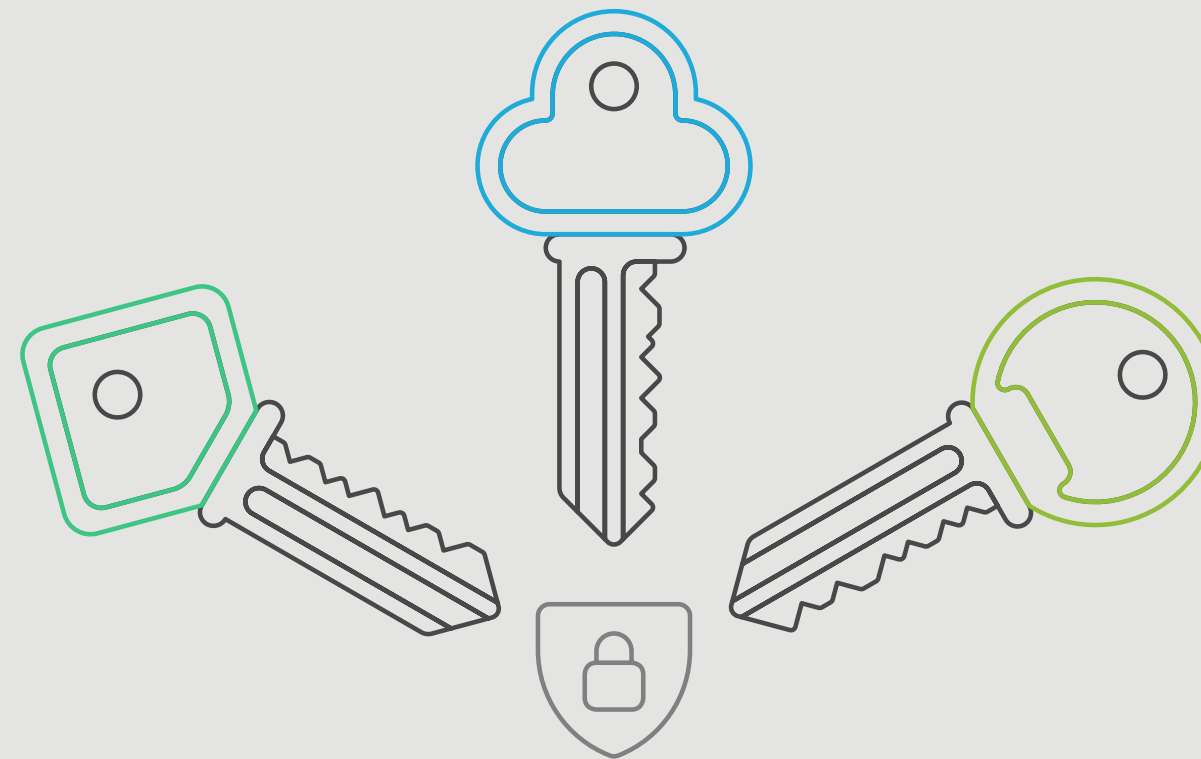
Ensures certificates are accepted by all common browsers without warnings.

## Automatic Certificate Management

Manages SSL/TLS certificates without manual intervention for ease of use.

## Security Enhancement

Improves overall system security through reliable certificate management.



Let's Encrypt  
Extension

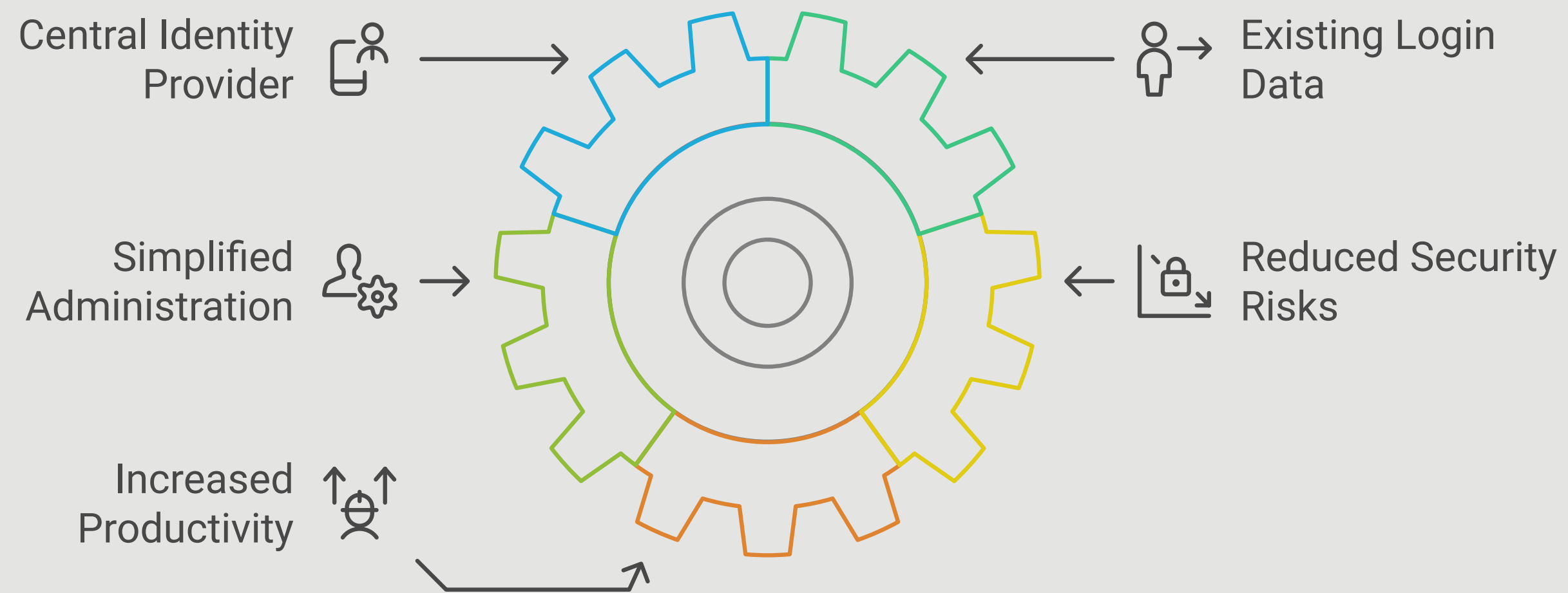
# CUSTOM CA *NEW*

Empower Your Trust  
Chain



# SINGLE SIGN-ON *NEW*

Enhancing Security and Convenience with SSO



# PRICES

COMMUNITY	BASIC	PROFESSIONAL	ENTERPRISE
<b>Unbegrenzte Geräte</b>	<b>Bis 30 Geräte</b>	<b>Ab 100 Geräte</b>	<b>Ab 100 Geräte</b>
<b>Kostenlos</b>	<b>Kostenlos</b>	<b>4,99 € / Gerät / netto pro Jahr</b>	<b>8,99 € / Gerät / netto pro Jahr</b>
<b>JETZT STARTEN</b>	<b>LIZENZ ERHALTEN</b>	<b>ANGEBOT ANFORDERN</b>	<b>ANGEBOT ANFORDERN</b>
<b>CORE FEATURES:</b>	<b>CORE FEATURES + ERWEITERUNGEN:</b>	<b>CORE FEATURES + ERWEITERUNGEN:</b>	<b>CORE FEATURES + ERWEITERUNGEN:</b>
<ul style="list-style-type: none"><li>✓ Automatische Softwareverteilung und Patch-Management</li><li>✓ Automatische Betriebssysteminstallation</li><li>✓ Konfigurations-Management</li><li>✓ Hardware- und Software-Inventarisierung</li><li>✓ Unterstützung mehrerer Standorte</li></ul>	<ul style="list-style-type: none"><li>✓ Directory Connector</li><li>✓ Linux Agent</li><li>✓ Lizenzmanagement</li><li>✓ Local Image</li><li>✓ Monitoring Connector</li><li>✓ User Roles</li><li>✓ WIM-Capture</li><li>✓ Secureboot</li></ul>	<ul style="list-style-type: none"><li>✓ Directory Connector</li><li>✓ Linux Agent</li><li>✓ Lizenzmanagement</li><li>✓ Local Image</li><li>✓ Monitoring Connector</li><li>✓ User Roles</li><li>✓ WIM-Capture</li><li>✓ WAN / VPN</li><li>✓ Zwei-Faktor-Authentifizierung</li></ul>	<ul style="list-style-type: none"><li>✓ Directory Connector</li><li>✓ Linux Agent</li><li>✓ Lizenzmanagement</li><li>✓ Local Image</li><li>✓ Monitoring Connector</li><li>✓ User Roles</li><li>✓ WIM-Capture</li><li>✓ Custom CA <i>NEU</i></li><li>✓ Let's Encrypt <i>NEU</i></li><li>✓ macOS Agent</li><li>✓ Scalability</li><li>✓ Secureboot</li><li>✓ Single Sign-On <i>NEU</i></li><li>✓ WAN / VPN</li><li>✓ Zwei-Faktor-Authentifizierung</li></ul>

<https://opsi.org/en/pricing>

# WHAT DOES UIB OFFER?

- ◆ Support
- ◆ Training courses
- ◆ Packaging



# SUPPORT

- ◆ Forum
- ◆ E-mail/telephone support
- ◆ Remote maintenance
- ◆ Packaging as a service

# TRAININGS

- ◆ Online
- ◆ On site
- ◆ Basic workshop
- ◆ Introduction to software packaging
- ◆ opsi-Script programming for advanced users

<https://opsi.org/en/training/>

# UPDATE-ABOS

- ◆ MS-Hotfixes
- ◆ MS-Office-Hotfixes
- ◆ opsi Standardprodukte
  - ◆ Mozilla Firefox
  - ◆ Mozilla Thunderbird
- ◆ Update-Abo Plus

<https://opsi.org/en/update-subscriptions/>

# CONTACT

- ◆ Website: <https://opsi.org/en/company/contact/>
- ◆ Phone: +49 6131 27561-0
- ◆ E-mail: [sales@uib.de](mailto:sales@uib.de) or [info@uib.de](mailto:info@uib.de)

# OPSI BOOK

Heike Jurzik



**Client-Management-System**

# OPSI

**Lösungen für  
heterogene IT-  
Umgebungen**

1. Auflage  
Aktuell zu  
opsi 4.3

Das umfassende Praxisbuch

# IMPORTANT LINKS

- ◆ <https://www.uib.de/>
- ◆ <https://opsi.org>
- ◆ <https://forum.opsi.org/>
- ◆ <https://docs.opsi.org/>
- ◆ <https://opsipackages.43.opsi.org/stable/>
- ◆ <https://tools.43.opsi.org/stable/>
- ◆ <https://ppop.opsi.org/>



**THANK YOU VERY MUCH!**

Questions?