



Opsi-QuickInstall Manual

uib gmbh

Table of Contents

1. Copyright	1
2. Opsi-QuickInstall	2
2.1. Preparation	2
2.2. Download and first Start	2
2.3. Opsi-Quickinstall GUI-Version	3
2.4. Opsi-Quickinstall No-GUI-Version	6
2.4.1. Start	6
2.4.2. Setup Program	6
2.4.3. Installation of the opsi-server	6

Chapter 1. Copyright

The Copyright of this manual is held by uib gmbh in Mainz, Germany.

This manual is published under the creative commons license 'Attribution - ShareAlike' (by-sa).



A description of the license can be found here:

<https://creativecommons.org/licenses/by-sa/3.0/>

The legally binding text of the license can be found here:

<https://creativecommons.org/licenses/by-sa/3.0/legalcode>

Most parts of the opsi software is open source.

Not open source are the parts of the source code which contain new extensions, that are still under cofunding, which have not been paid off yet. See also: [opsi cofunding projects](#)

All of the open source code is published under the AGPLv3.



The legally binding text of the AGPLv3 license can be found here: <http://www.gnu.org/licenses/agpl-3.0-standalone.html>

Information about the AGPL: <http://www.gnu.org/licenses/agpl-3.0.en.html>

For licenses to use opsi in the context of closed source software, please contact uib gmbh.

The names 'opsi', 'opsi.org', 'open pc server integration' and the opsi logo are registered trademarks of uib gmbh.

Chapter 2. Opsi-QuickInstall

Opsi-QuickInstall is a program to quickly and easily install an opsi-server on the following Linux distributions:

- Debian 9, Debian 10,
- openSUSE Leap 15.1, openSUSE Leap 15.2,
- SLES 15 SP1, SLES 15 SP2,
- Ubuntu 18.04, Ubuntu 20.04

2.1. Preparation

Check the entry for the opsi-server in the file '/etc/hosts', or check the output of:

```
getent hosts $(hostname -f)
```

The result should look like the following example:

```
'192.168.1.1 server.domain.tld server'
```

Here the IP address should belong to the network interface, to which the Clients will be connecting.

If the result looks different from the above example (contains eg. '127.0.0.1' or 'localhost'), or the full qualified hostname does not contain one or more dots, then you must correct your name resolution (DNS or `/etc/hosts` file).

You can find further information on that in the chapters 4.3.1 to 4.3.3 in the opsi Getting Started: * <http://bonifax.uib.local/opsidoc/v4.2/html/en/opsi-getting-started-v4.2/opsi-getting-started-v4.2.html#opsi-getting-started-introduction-software-and-configuration-preconditions>

2.2. Download and first Start

You can download Opsi-QuickInstall as zip-file under the following link: <https://download.uib.de/opsi4.2/stable/quickinstall/> .

Unzip the file and open the folder opsi-quickinstall. Now you must decide whether you want to execute the installation with or without graphical user interface.

Both versions are described below.

You can find more information on the properties QuickInstall asks for in the opsi-manual under chapter '9.5.10.1 The product l-opsi-server' : <https://download.uib.de/opsi4.2/stable/documentation/opsi-manual-v4.2-en.pdf> . There you also find the default values of the properties. Different from the manual is only the default-value of the property **allow_reboot**; this one is QuickInstall *false*.

2.3. Opsi-Quickinstall GUI-Version

Open the folder 'gui' and execute the file 'opsi_quick_install_project' (for example per double click).

A window appears in which you can first select the language for Opsi-QuickInstall and the type of installation:

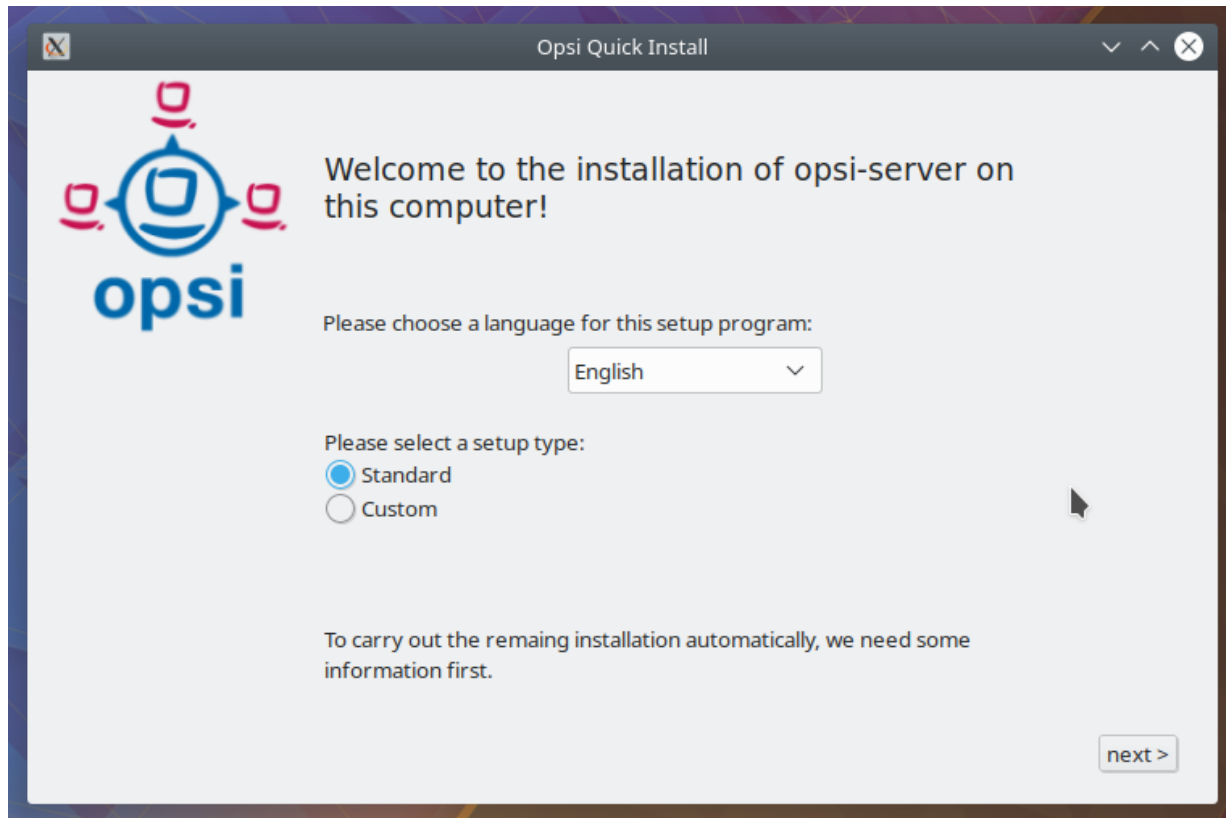


Figure 1. Language and type of installation

In the custom installation you can make more detailed settings.

Click on 'next>' and answer the questions. For some questions you will find information signs on the right hand side. These can give you more information about the question on mouse click.

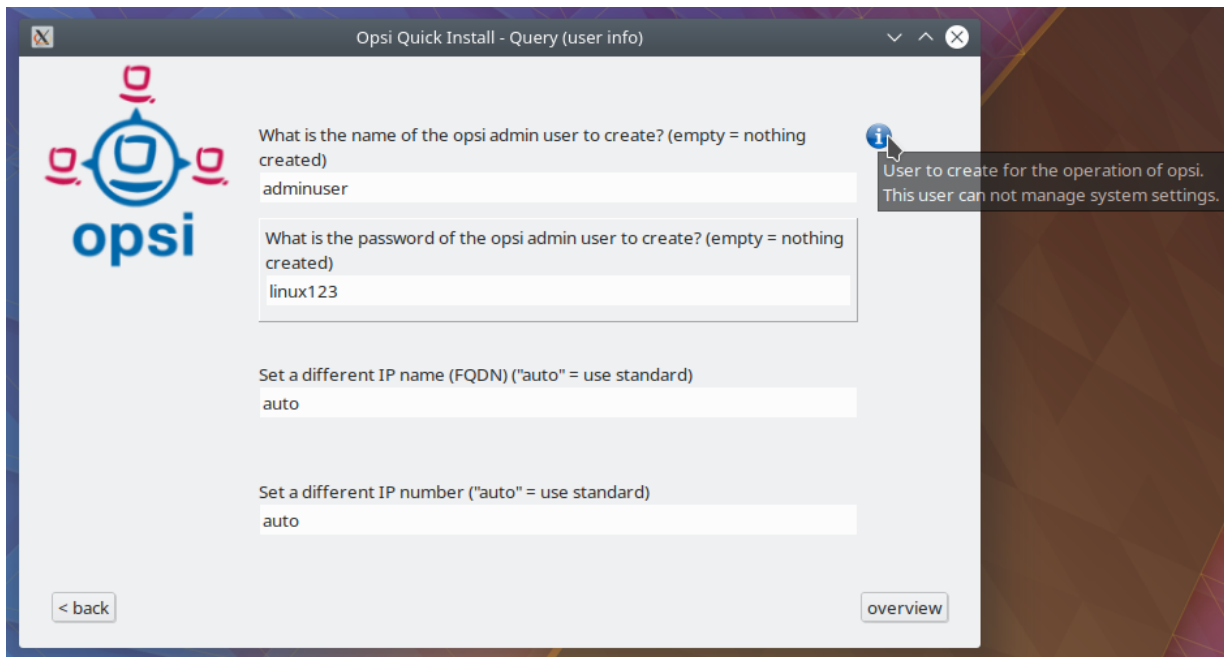


Figure 2. Information

The questions on name and password of the opsi admin user give example values (also shown on the image [Figure 2, “Information”](#)). For security reasons you should change these values. Do NOT use the examples!

After the queries, QuickInstall will show you an overview where you can check all your answers. If everything is correct, click 'finish', type in your password and click 'finish' again. Then the installation of the opsi-server will start.



Figure 3. Installation

The installation may take some minutes. In the end, QuickInstall shows you whether it was successful.

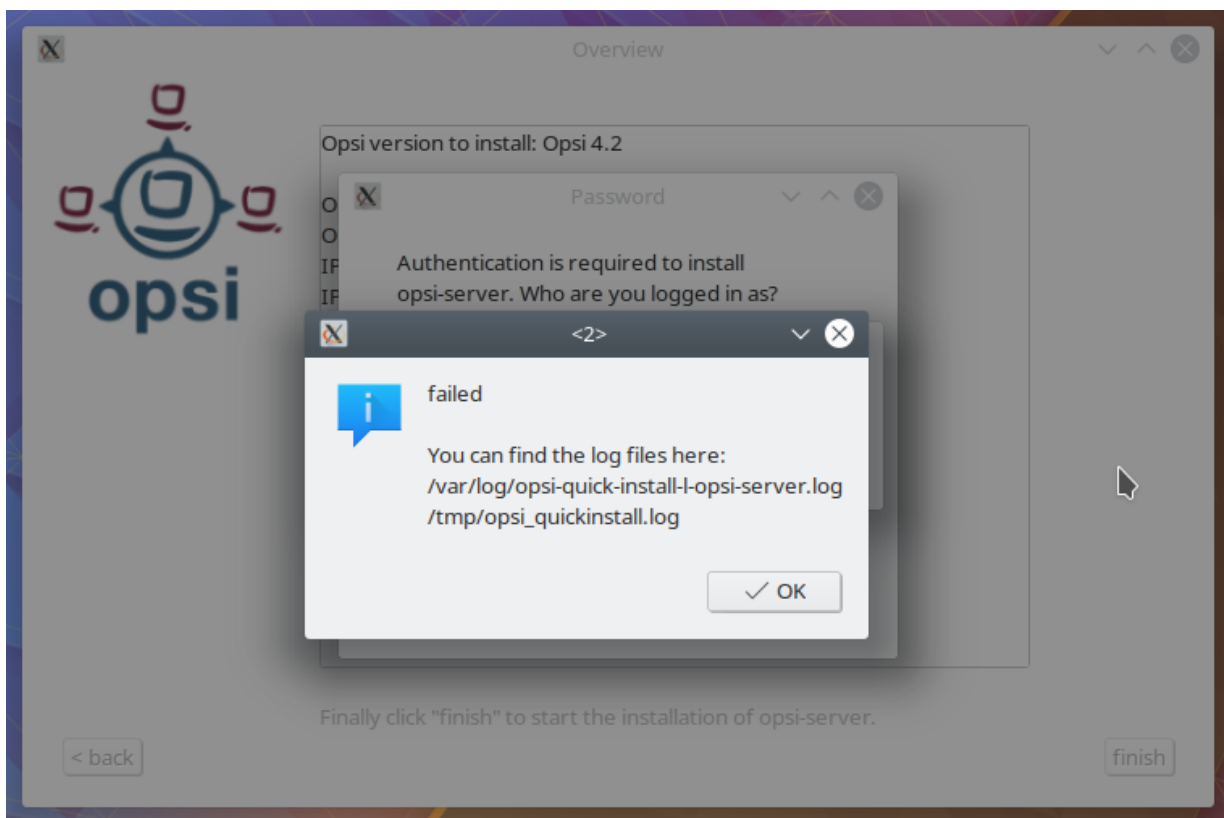


Figure 4. Result

If the result is 'success', your opsi-server is now ready for use.

If the result is 'failed', you can search in the log files for the error or, if you have a support contract, you can directly contact uib.

2.4. Opsi-Quickinstall No-GUI-Version

2.4.1. Start

Open the folder 'nogui' and execute the file 'opsi_quick_install_project' with one of the following parameters on the console as root:

- **-d**, to use the default values for the installation of the opsi-server and immediately start the installation (IMPORTANT: Through that, QuickInstall will also create the opsi admin user with example values for the name and password, which are 'Alexandra' as name and 'linux123' as password. For security reasons you should change these values afterwards!),
- **-f <file>**, to use the values from a file for the installation of the opsi-server and immediately start the installation,
- **-n**, (recommended) to start a setup program on the console, in which you can set the values for the installation separately.

So for example execute

```
sudo ./opsi_quick_install_project -n
```

The operation of the setup program is shortly described in the following.

2.4.2. Setup Program

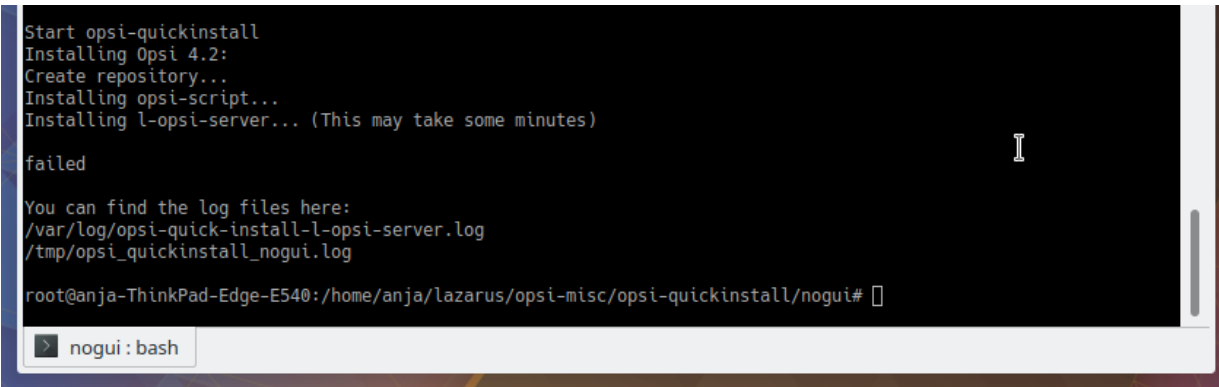
If you chose the parameter **-n**, answer the questions that are asked. On each question you also have the possibility to type in one of the following commands:

- **-b**, to jump back to the previous question,
- **-h**, (only for questions that are marked with a ***** at the end) to get further information on this question,
- type nothing in and press Enter to use the default value for this question.

Afterwards QuickInstall will show you an overview where you can check all your answers. If everything is correct, click Enter to start the installation of the opsi-server.

2.4.3. Installation of the opsi-server

The installation of the opsi-server may take some minutes. In the end, QuickInstall shows you whether the installation was successful.



```
Start opsi-quickinstall
Installing Opsi 4.2:
Create repository...
Installing opsi-script...
Installing l-opsi-server... (This may take some minutes)

failed

You can find the log files here:
/var/log/opsi-quick-install-l-opsi-server.log
/tmp/opsi_quickinstall_nogui.log

root@anja-ThinkPad-Edge-E540:~/home/anja/lazarus/opsi-misc/opsi-quickinstall/nogui#
```

Figure 5. Result

If the result is 'success', your opsi-server ist now ready for use.

If the result is 'failed', you can search in the log files for the error or, if you have a support contract, you can directly contact uib.