

# Opsi Features

opsi  
Version 3.3.1

## opsi - open source Desktop Management

### Client- and Depot-Administration / Management-Interface:

- Group Management
  - Select and process groups of clients
  - Save and load client groups

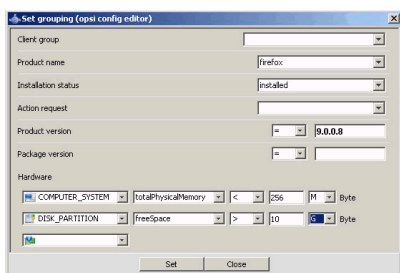


Fig. 1: opsi-Configed: Group selection

- Select clients based on criteria like installed software, software version or hardware:
- Select clients by location specific depot
- Wake on LAN Support
- List of clients can be sorted by client name, description and 'last seen' time stamp:

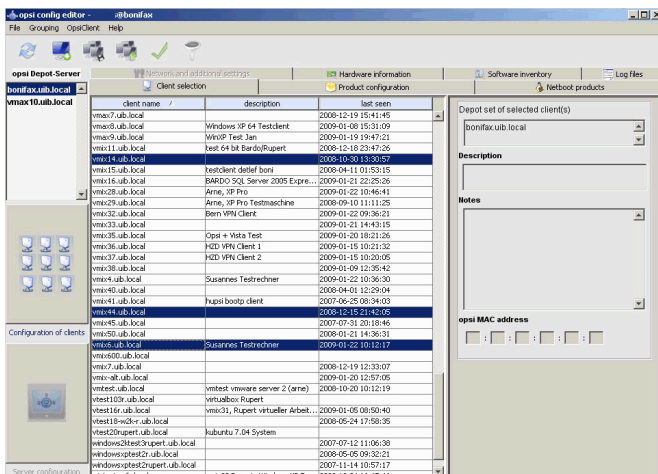


Fig. 2: opsi configed: client and depot selection

- Presentation of installation status and next required action
- Display of installable and installed software and versions
- Presentation of the hardware inventory data
- Create and delete clients easily
- Graphical Management Interface, which can be used platform independent via web browser

### Netboot products: OS-Installation and more

- Installation via PXE-Boot or via CD
- Supported Operating Systems: Windows 2000 / XP / 2003 / Vista / 2008
- Package based unattended Installation
- Simple integration and automatic detection of new client hardware drivers (PCI, USB, HD-Audio)
- Save and restore NTFS-Images
- More netboot products like memtest, wipedisk, ...

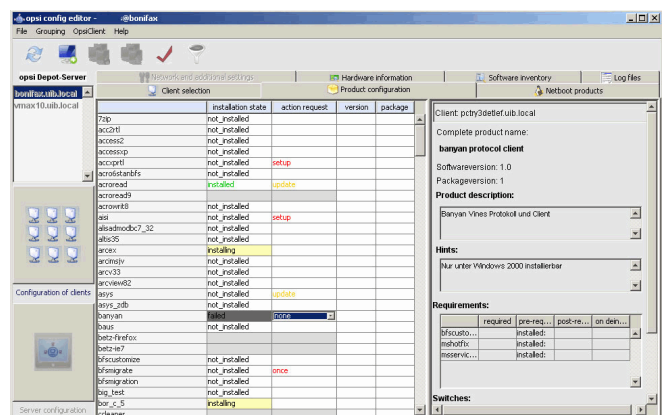


Fig. 3: opsi configed: product configuration

### Software deployment and more

- Software installation and deinstallation via different methods like silent / unattended installation, interactive setup with recorded answers and difference analysis
- Editing of registry, start menu and desktop entries, Ini-files, XML files and text files
- Calling external programs and scripts, catch and provide their output as variables for further processing
- File copy with or without version control
- Reboot and shutdown control
- Logging
- Administrative tasks e.g. via WMI calls

### opsi packages

- contains all installation files, scripts and meta data in one file
- Simple menu driven creation of packages
- Installation tool which supports installation and administration of opsi packages on multiple depots in different locations
- The presentation of software versions and package version gives you a powerful package administration (Product Lifecycle Management)
- package administration without root privileges

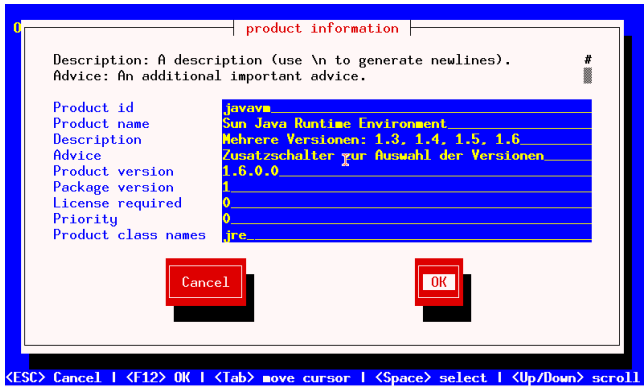


Fig.4: creating a package

## Hard- and Software inventory

- Detailed detection of hardware information via WMI and other commands
- Hardware inventory also available from Linux boot image
- Gathering software inventory data from the registry
- Central storage of the inventory data, optional in a SQL backend with history function

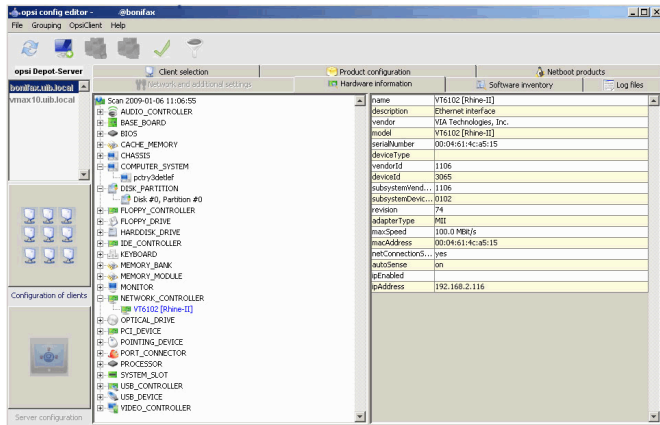


Fig.5: Presentation of hardware inventory

## Miscellaneous

- simple initial roll out of the opsi client agent
- central logging and presentation of the log files via the web based management interface

## License management

- Management of license contracts and pools
- Lock and release of licenses via the software deployment
- Optional manual maintenance of the license data base regarding manual installations
- Reports about existing licenses, used licenses according to the software deployment and according to the software inventory

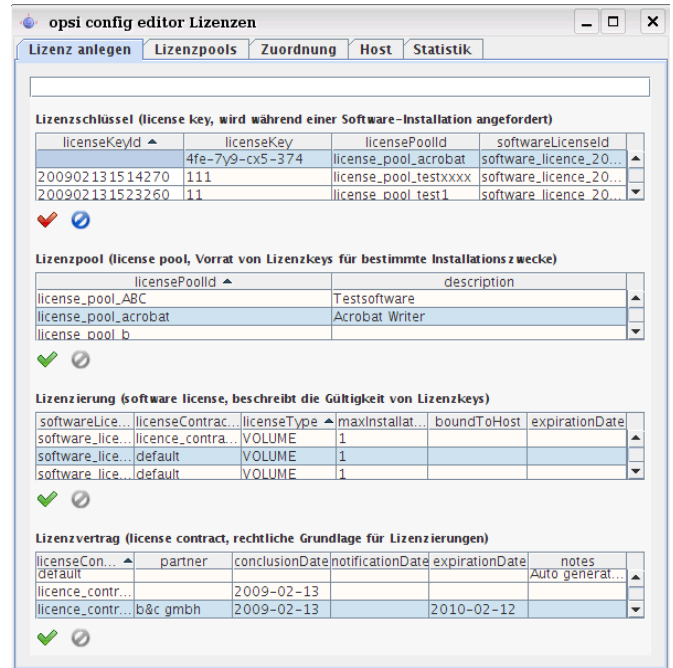


Fig.5: Creating license contracts and pools

## Concept

The opsi Configuration editor and all other components communicate over HTTPS with the opsi web service.

The web service retrieves data from and writes data to specified backends. Which backends are used is completely transparent for the other opsi components.

The most important data backends are property file based or LDAP based.

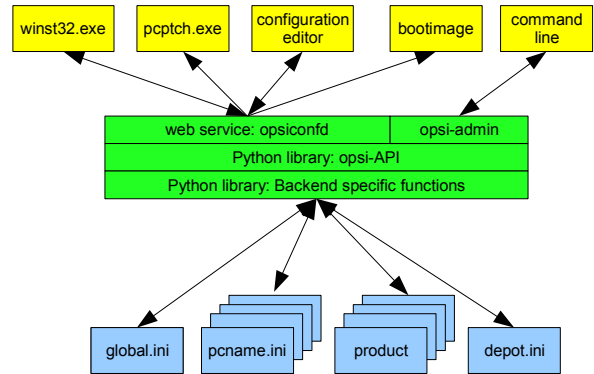


Fig.6: modular web service based architecture

System administrators acknowledge the completely open architecture of the opsi system: Everything can be analyzed down to the elementary configuration item.



## Contact

Please visit us at the opsi.org project web site <http://www.opsi.org> or for commercial support at <http://uib.de/en>

uib gmbh ▪ Bonifaziusplatz 1B ▪ 55118 Mainz  
Fhone: +49 6131 / 275610 ▪ Fax: +49 6131 / 2756122 ▪ Mail: [info@uib.de](mailto:info@uib.de)